



Intelligent Video, Security and Information Management Platform

Senstar Symphony software delivers an all-in-one solution for video, security and information management. Symphony works with cameras from all major manufacturers, scales to deployments of any size, and is easy to use and configure.

Built-in support for industry-leading video analytics, perimeter intrusion detection sensors, and access control devices makes Symphony a highly versatile and cost-effective video surveillance platform.

SCALABLE, HIGH-PERFORMANCE ARCHITECTURE

Symphony uses a unique, high-performance architecture that simplifies deployment planning, reduces server costs and is highly scalable:

- Optimized for all video management software (VMS) functions (video, management and analytics), Symphony does not require dedicated servers for specific functions.
- Built-in server redundancy and automatic failover avoids complex and costly Windows® Clustering requirements.
- Support additional cameras by adding additional server resources – no reconfiguration or licensing scheme changes required.

Features and Benefits

Scalable, high-performance architecture

- Scales to support thousands of cameras
- Simple per-camera licensing (no client or server limitations)
- Built-in server and storage failover
- Centralized cloud management via Senstar Enterprise Manager™

Easy to use

- Web-based administration
- Powerful, intuitive Windows® operator client
- Web and mobile clients
- Graphical video analytic configuration

Open ecosystem

- Multi-vendor camera support
- Runs on off-the-shelf hardware
- ONVIF Profiles S and G
- RESTful API

Intelligent video analytics

- Native video analytics for alarm generation and business intelligence
- Available individually or bundled

Cybersecurity and privacy

- Role-based access with granular permissions
- Privacy controls
- TLS 1.2 encryption

OPEN ECOSYSTEM

Symphony installs on off-the-shelf hardware. It supports thousands of network devices as well as industry standards, including ONVIF profiles S and G. Out-of-box integrations with PSIM, intrusion, and access control products improve operator efficiency by delivering a seamless view of events, while its RESTful API prevents vendor lock-in.

EASY TO USE OPERATOR INTERFACES

Symphony includes several options for viewing video:

- **Windows® operator client** – A full-featured, intuitive video and alarm management client. Controls are displayed based on device capability and user permissions, including PTZ controls, access control, intrusion sensors, two-way audio, and general I/O.
- **Web interface** – An HTML5-compliant web interface replicates key VMS functionality, including video playback, camera control, event timeline, and reports.
- **Mobile apps (iOS and Android)** – Support live video and playback, video analytics, PTZ control, and alarm management. Each app can connect to multiple servers, enabling a user to remotely monitor several deployments.



Free mobile apps are available from the App and Play stores

- **Video wall** – Included with an enterprise license, enables a highly customizable layout driven by video analytic rules, manual configuration, and camera drag-and-drop.

NATIVE ANALYTICS

Symphony has been developed from the ground up to support video analytics. Server-based or embedded analytics are seamlessly supported, as well as third-party applications through the metadata engine.

Analytic applications include motion tracking, auto-PTZ tracking, face recognition, license plate recognition, left/removed object detection, and people counting. For a complete list, refer to Senstar's Video Analytics datasheet.

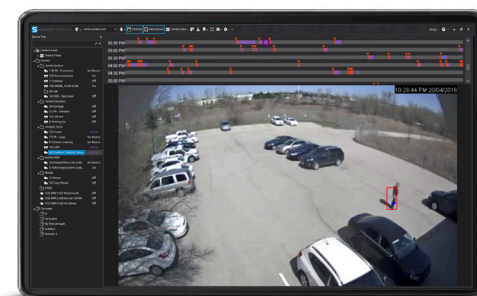


Fully integrated built-in analytics

INTELLIGENT SEARCH AND INVESTIGATION

Symphony includes a graphical timeline and intelligent search capabilities. By leveraging events and metadata generated by its video analytics, operators can quickly find, review, and export video containing specific events or people.

Comprehensive reports, including operator activity, event history, and video analytic results, can be also generated and exported.



Timeline graphically shows events, color-coded by type

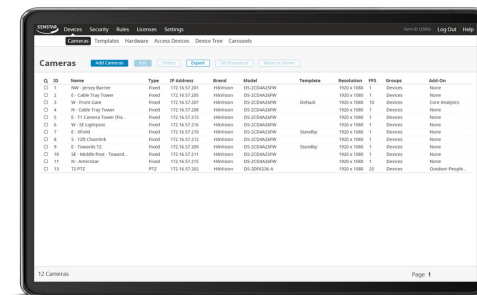
BROWSER-BASED ADMINISTRATOR CLIENT

Administration is handled via a browser-based client, eliminating the need to install and maintain a separate Windows® management application. The client can be accessed anywhere on the network. Reusable templates and rules speed up the configuration of large deployments.

CENTRALIZED CLOUD MANAGEMENT

Through the use of Senstar Enterprise Manager, Symphony can be managed centrally, which significantly reduces the administrative burden typical in multi-site deployments.

Software updates, configuration, and health monitoring can all be centralized ensuring a strong and up-to-date video deployment, while limiting downtime and operation costs.



Simple and efficient browser-based administration

Technical Specifications: Symphony Clients

Symphony client support is included with camera licensing (no additional client software purchases required).

	Windows® Client	Web Client	Mobile Client	Thin Client
CORE FEATURES				
Supported operating system/platform	Windows® 7, 8, 10	Web browser	iOS or Android	Linux appliance
Number of concurrent server connections	unlimited	unlimited	unlimited	1
Customizable user interface	■			
Graphical timeline	■	■		■
Hierarchical site map navigation	■	■	■	
Camera list navigation	■	■	■	
Visual tracking links (video overlay hotspots)	■			
Cameras from multiple servers and sites	■		■	■
Multi-monitor support (including 4K)	■			
Camera sequence	■			■
Panoramic (360-degree) support	■	■	■	■
Manually trigger outputs	■	■	■	
Advanced video analytic search (intelligent search)	with add-on			
Integrated messenger	■			
Alarm console	■			
Video export	■			■
Bookmark events	■			
Alarm log	■	■	■	
Remote support module	■			
Multiple languages	■	■	■	■
Basic map support	■			
Dynamic GIS map support (Enterprise server license)	■			

	Windows® Client	Web Client	Mobile Client	Thin Client
PTZ SUPPORT				
Manual movement control	■	■	■	■
Point and click control	■	■	■	
Zoom on marked area	■	■	■	■
Go to preset positions	■	■	■	■
Joystick support	■			■
VIRTUAL MATRIX				
Customizable multi-camera layouts	■	■	■	■
Configurable display options (fixed)	■			
Configurable display options (motion)	■			
Configurable display options (alarm)	■			■
USER ACCESS				
User monitoring	■			
Permissions per user	■	■	■	■
Permissions per user group	■	■	■	■
Security profiles	■			
Microsoft Active Directory	■	■	■	
Cross-domain authentication (Professional/Enterprise server license)	■	■	■	
Restrict simultaneous logins (Professional/Enterprise server license)	■	■	■	
Supervisor logins (Professional/Enterprise server license)	■			
REPORTS				
Login report	■			
Alarm counts and statistics	■			
Object count reports (e.g., people, vehicles)	with add-on			

Technical Specifications: Symphony Server

	Standard License (single server)	Professional License (multi-server)	Enterprise License (high availability)
CORE FEATURES			
Supported operating systems	Windows® 7, 10, Server 2008, 2012, 2016, 2019		
Number of cameras per server	1024	1024	1024
Number of concurrent client connections	unlimited	unlimited	unlimited
Multi-server (server farm)	—	unlimited	unlimited
HTML5-compliant web client	■	■	■
Mobile application (iOS, Android)	■	■	■
Server virtualization	■	■	■
2-way audio	■	■	■
Unicast, multicast and multistream support	■	■	■
Network video support (MJPEG/MPEG-4/h.264/h.265)	■	■	■
Device packs	■	■	■
Multiple languages	■	■	■
Customizable user access levels	■	■	■
Privacy controls and video scrambling	■	■	■
Time-based access to recorded video		■	■
Automatic server failover			■
Video wall			■
STORAGE AND ARCHIVING			
Record locally or to edge/network storage	■	■	■
Record on motion (from camera), schedule, alarm and continuous	■	■	■
Redundant recording			■
Failover recording			■

	Standard License (single server)	Professional License (multi-server)	Enterprise License (high availability)
MANAGEMENT			
Automatic camera detection	■	■	■
Centralized device management	■	■	■
Automatic configuration backups	■	■	■
Uninterrupted configuration changes	■	■	■
Remote diagnostics	■	■	■
SNMP health monitoring	■	■	■
CPU overload protection			■
Cloud management	Requires Senstar Enterprise Manager		
INTEGRATION			
External I/O devices	■	■	■
Generic events via TCP/IP	■	■	■
Alarm panel	■	■	■
Access control	Symphony AC only	■	■
Server API/SDK	■	■	■
OPC data access support		■	■
ALERTS AND NOTIFICATIONS			
Mobile devices (iOS and Android)	■	■	■
I/O devices	■	■	■
Email notification, FTP, TCP, SNMP, OPC	■	■	■



3601 E. Algonquin Rd., Ste. 800
Rolling Meadows, IL 60008
Direct: +1 847 818 1649
E-Mail: sales@safemobile.com